



**THINGS TO EXPLORE**

**Zhongshan Park**  
(MAP REF: A4)  
Nestled in between our hotels, you will find the scenic and tranquil Zhongshan Park. Look down on the pavement to view plaques that document the life of Dr. Sun.

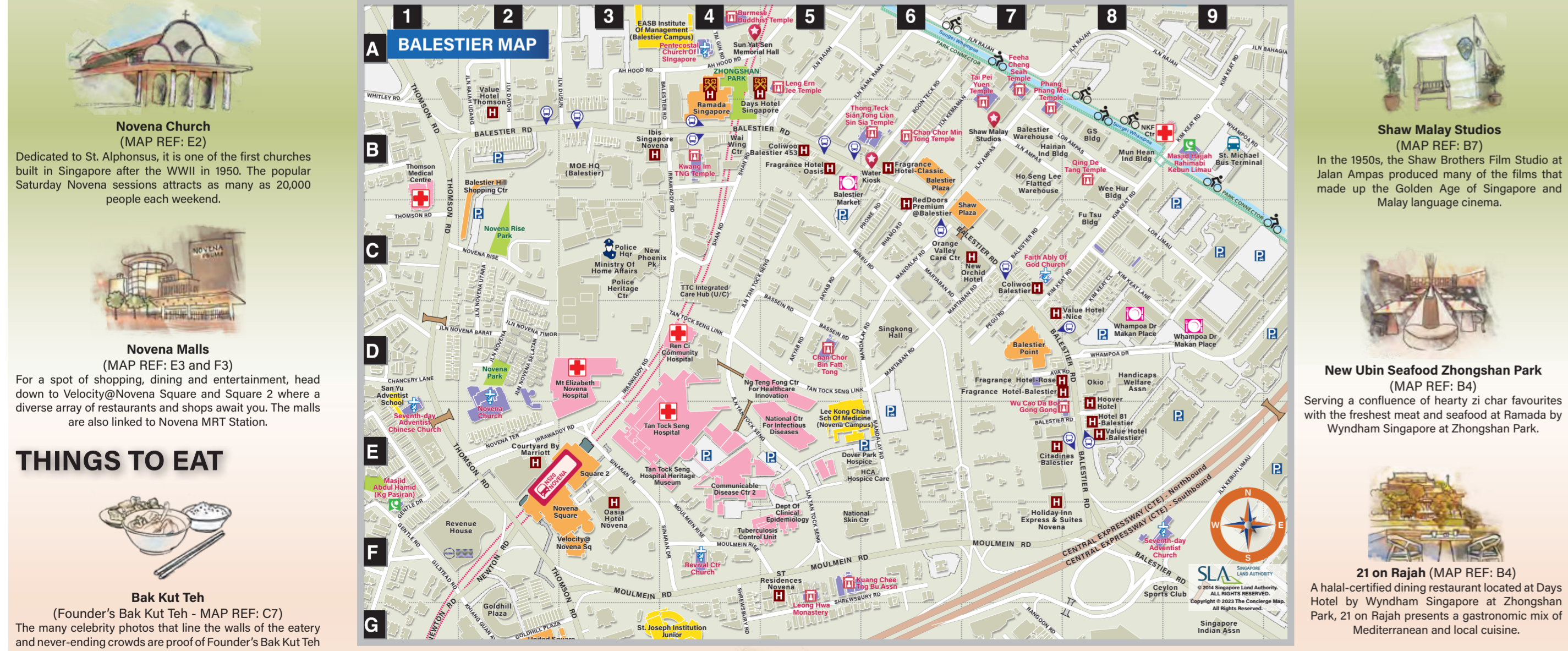
**Sun Yat Sen Nanyang Memorial Hall**  
(MAP REF: A4)  
Declared a National Monument in 1994, the villa was the local headquarters of Dr. Sun Yat Sen. The museum now offers a closer look at the life of Dr. Sun and the contributions made by the Chinese communities in the Southeast Asia to the 1911 Revolution which overthrew the Qing Dynasty.

**Burmese Buddhist Temple**  
(MAP REF: A4)  
With history dating back to 1876, the temple is the only Buddhist temple outside of Myanmar built in traditional Burmese architectural style, complete with eye-catching golden spire and an 11-foot (3m) tall marble statue of Buddha weighing 10 tonnes.

**Singapore Icons Mural Art at EASB**  
(MAP REF: A3)  
For an insta-ready image featuring Singapore's famous landmarks, visit EASB located just a street away from Ramada and Days Hotel.

**Kwan Im Tng Temple**  
(MAP REF: B4)  
The Kwan Im Tng Temple at Balestier Road is one of the many Chinese temples in Singapore dedicated to Guanyin, the Goddess of Mercy.

**Masjid Hajjah Rahimabi Kebun Limau**  
(MAP REF: B9)  
Built in 1984, the mosque was named after Kebun Limau which means lime garden in Malay, an old place name for the area which had many lime trees in the late 1800s. It was also named after philanthropist Hajjah Rahima Bee Ahmad Angullia.



**Novena Church**  
(MAP REF: E2)  
Dedicated to St. Alphonsus, it is one of the first churches built in Singapore after the WWII in 1950. The popular Saturday Novena sessions attracts as many as 20,000 people each weekend.

**Novena Malls**  
(MAP REF: E3 and F3)  
For a spot of shopping, dining and entertainment, head down to Velocity@Novena Square and Square 2 where a diverse array of restaurants and shops await you. The malls are also linked to Novena MRT Station.

**Bak Kut Teh**  
(MAP REF: C7)  
The many celebrity photos that line the walls of the eatery and never-ending crowds are proof of Founder's Bak Kut Teh authentic appeal. Bak Kut Teh is a Chinese dish consisting of pork ribs simmered in a broth of herbs and spices.

**Chicken Rice**  
Balestier is one of the best places to sample Singapore's national dish of steamed or roasted chicken with flavoured rice cooked with chicken stock.

**Tau Sar Piah**  
Also known as Bean Paste Biscuit, there are two kinds of Tau Sar Piah, a sweet and a salty version to cater for different taste buds. What's your preferred flavour?

**Balestier Market** (MAP REF: B5)  
Built in 1922 for local farmers to sell their produce and served as a food-retaining centre during World War II, the conserved building houses food stalls serving a variety of mouth-watering local favourites.

**Whampoa Market** (MAP REF: D8 and D9)  
Among the affordable delights found in the food centre, the Rojak (fruit and vegetable salad), Duck Rice, Nasi Padang and Fish Head Steamboat are the much-loved favourites of locals and tourists alike.

**Tani Bistro & Bar** (MAP REF: B4)  
A contemporary bistro and bar that brings to diners an inspiring and modern take on Indian cuisine amidst the lush greenery of Zhongshan Park, Tani serves great food at affordable prices.

**Come let's Jalan Jalan!**

**MAHA SASANA RAMSI BURMESE BUDDHIST TEMPLE (TOP)**  
Opening Hours: Daily from 9:00am to 6:00pm  
This is the first and only Burmese Buddhist temple built outside of Burma (Myanmar) in the traditional style. Beneath the beautifully crafted teak roof of Maha Sasana Ramasi, sits the largest 3-metre enshrined pure white marble Buddha statue that made its way ashore in 1921 from Myanmar, 2,500 kilometres arduous journey over sea and land.

**SUN YAT SEN NANYANG MEMORIAL HALL (BELOW)**  
Opening Hours : Tuesday to Sunday from 10:00am to 5:00pm and Closed every Monday.  
Be lost in time with one of the few surviving colonial-style villas that was gazetted as a National Monument, the Sun Yat Sen Nanyang Memorial Hall. This villa shared memories of Dr. Sun's and his Nanyang supporters during the 1911 Revolution. It underwent an enhancement in 2014, the refreshed galleries now features more artefacts contributed by the community and new multimedia features such as hologram projection and 3D mapping projection.

**NOVENA SHOPPING MALLS**  
Opening Hours: Velocity @ Novena Square/Square 2/ United Square Shopping Mall from 10:00am to 10:00pm  
Unleash your inner shopaholic at Novena, a second alternative for some retail therapy. This coveted residential and commercial district comprises of three main shopping malls, flanked by plenty of fashion, dining and entertainment options.

**WINDSOR NATURE PARK & MACRITCHIE TREETOP WALK (BELOW)**  
Nature is always a great refuge, located next to the Treetop Walk is the local trekker's favourite wetland wonderland. Featuring 3 easy trails to complete within an hour, the Drongo trail boasts a 4metre high, 150metre long canopy flora walk, the Squirrel, and the Hanguana trails are true to their names where you can catch groups of squirrels and plenty of Hanguana Rubinea bushes (which can only be found in Singapore), dotted along the path.

**Useful Numbers**

Ramada Singapore	6808 6888	Taxis	6552 1111
Days Hotel Singapore	6808 6868	City Cab	6552 1111
Police	999	Comfort Taxi	6258 8888
Ambulance (Emergency)	995	HDT Electric Taxi	6258 8888
Ambulance (Non-Emergency)	1777	Premier Taxis	6363 6888
		SMRT	6555 8888
		Strides Mobility	6555 8888
		Trans Cab	6555 3333

**SAY HELLO**  
to a destination that's always worth the journey.

A warm welcome to the Ramada and Days Hotels by Wyndham Singapore at Zhongshan Park, this will be the start of your journey in this foodie and cultural haven in Singapore.

Weave among the beautifully preserved shophouses, indulge in the "national" dish of Singapore - chicken rice, the aromatic lip-smacking bak kut teh or a savoury bite on the Balestier's famous flaky confectionery tau sar piah and plenty more. Snap your perfect travel shot with the medley of landmark buildings and monuments that offers an up-close look at Singapore's unique history and culture.

We hope you have an enjoyable time discovering the charms and colourful history of Singapore and if there is anything we can assist, please feel free to approach our friendly concierge!

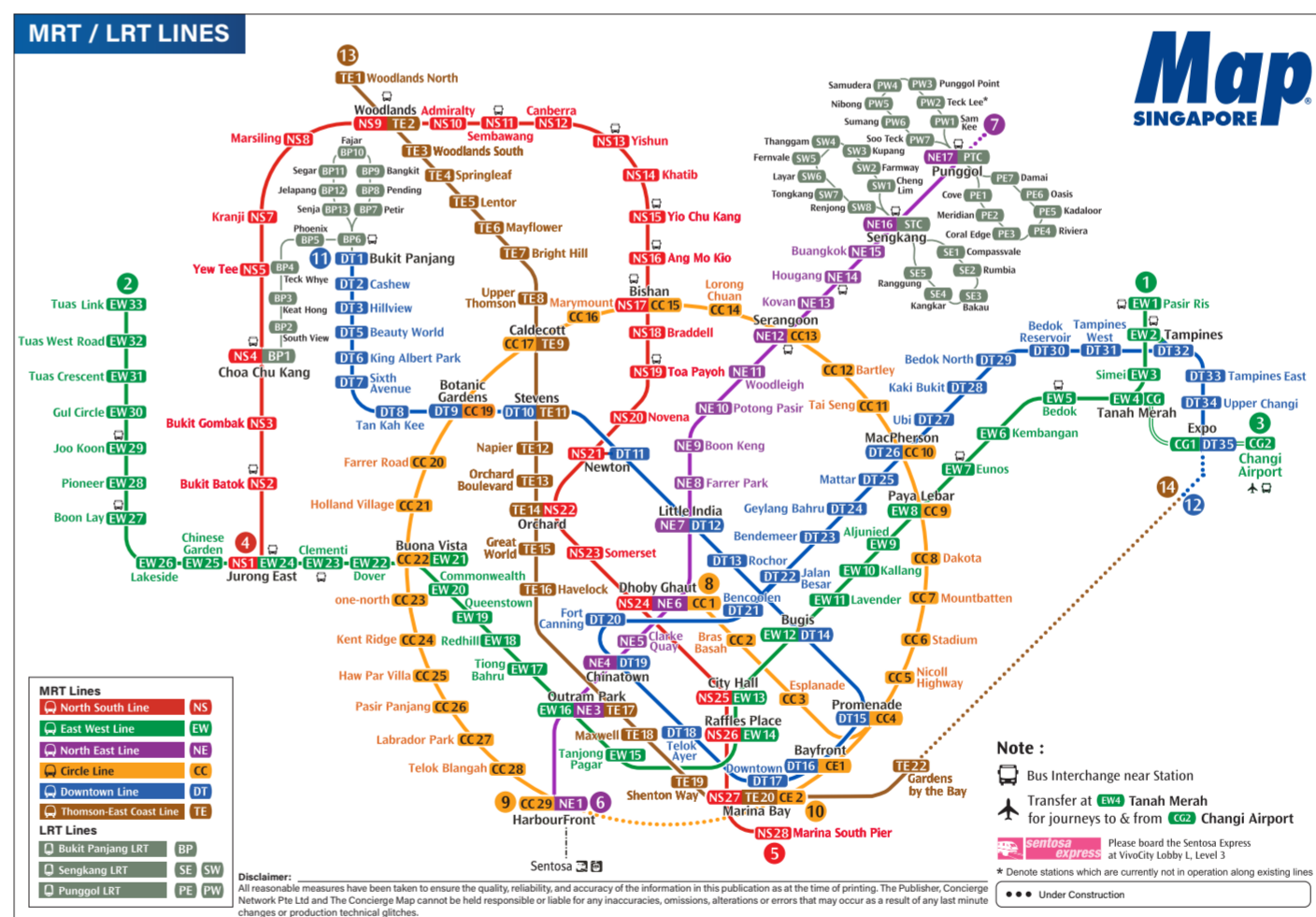
**Tony Cousens**  
General Manager  
Ramada and Days Hotels by Wyndham Singapore at Zhongshan Park

**RAMADA SINGAPORE**  
Ramada by Wyndham Singapore at Zhongshan Park in the Balestier and Novena area offers 352 well-appointed contemporary guest rooms with free WiFi, catering to both business and leisure travellers. Facilities include a 30-metre swimming pool, 24-hour gym, versatile meeting and banquet spaces, business centre, a self-service laundromat for travellers' convenience and New Urban Seafood Zhongshan Park.

**ABOUT BALESTIER**  
A RICH MEDLEY OF ARCHITECTURE, HERITAGE AND HISTORY  
Balestier is a fascinating area that tells a riveting tale of Singapore's remarkable journey, from British colonial times to a progressive, democracy society today.  
Visit historical monuments marking the 1911 Chinese Revolution and wander along the five-foot ways that line the landmark buildings rooted in the area's 180-year history. Explore quaint shops of vanishing trades or sit down to a traditional meal of chicken rice or bak kut teh at one of many eateries that define the true-blue Singaporean epicurean experience.  
Slide your feet into your favourite walking shoes and with our guide and a camera in hand, you are all ready to discover the colourful and rustic charms of the wonderful district we call Balestier.

**DAY'S HOTEL SINGAPORE**  
Days Hotel by Wyndham Singapore at Zhongshan Park comprises 405 stylishly designed guest rooms with free WiFi. Facilities include a 24-hour gym, a self-service laundromat for travellers' convenience and 21 on Rajah, a halal-certified dining restaurant.

**ZHONGSHAN MALL**  
Next to the lush outdoor spaces of Zhongshan Park, Zhongshan Mall houses an array of retail stores, a FairPrice Finest Supermarket and F&B outlets.



**RAMADA**  
BY WYNDHAM  
SINGAPORE  
AT ZHONGSHAN PARK

**Days Hotel**  
BY WYNDHAM  
Singapore  
at Zhongshan Park

**YOUR SMILE IS OUR PRIORITY**

**About Us**  
Established since 2000, we have been providing our patients with personalised and professional dental care. We also offer comprehensive, high quality dentistry in a safe and comfortable environment.

**dePacific**  
DENTAL GROUP

Teeth Whitening, Dental Implants, Dental Exam

Contact us: 6594 4852 | www.depacific.com

**TANI**  
RESTAURANT & BAR

**Contemporary Indian Cuisine for the Soul**  
Nestled amidst the lush greenery of Zhongshan Park, Tani is a contemporary bistro and bar that brings you an inspiring and modern take on Indian cuisine in a relaxing environment. At Tani, passion is the most important ingredient that enables our genuine approach to food & hospitality to shine. Tani, flowing from our hearts... to your table.

+65-6592 0098 | All Ramada & Days guests enjoy 10% discount on ala carte food items. Not applicable on set lunch and drinks.  
20 AH HOOD ROAD, Singapore 329882

**LiveWellMedical**  
Family Clinic 家庭診所

**Our services:**  
• Urgent care  
• Acute Medical Care  
• Men's & Women's Health  
• Adult, children and travellers vaccination  
• Health screening  
• House/Hotel call

20 Ah Hood Road #01-08  
Zhongshan Mall Singapore 329984  
Tel: +65 69099888, Whatsapp: +65 91803192  
Please visit website for appointments and operating hours.  
www.livewellmedical.com.sg

**WELCOME TO SINGAPORE**

**RAMADA** | **Days Hotel**

This Ramada and Days Hotels by Wyndham Singapore at Zhongshan Park Branches is specially produced for you by:

Major attraction tickets are available at the Concierge counter at Ramada by Wyndham Singapore at Zhongshan Park. Please approach them for more information.

**LEGEND & ESSENTIAL NUMBERS**

**ESSENTIAL NUMBERS**

Directory Assistance	100	Changi Airport Control Centre	6099 6969
Police Emergency	999	Baggage Storage (17 Transit)	6214 0318
Police Emergency SMS	999	Baggage Storage (Daily)	6214 0628
Police Hotline	1800-255-0000	Baggage Storage (17 Transit) - 7 am to 10pm	6214 0672
SCDF Ambulance and Fire Service	1800-678-2000	Baggage Storage (17 Transit)	6214 0672
Touristline	1800 6786 2000	Weather Information Service	6542 7780

**EMBASSIES / HIGH COMMISSIONS / CONSULATES**

Australia	L10	6199 4390	Luxembourg	L11	6260 6044
Bangladesh	K16	6255 0075	Malaysia	M12	6830 0062
Belgium	K14	6232 8877	Maldives	M12	6720 9032
Brazil	K12	6258 9866	Maldives	M12	6224 2902
Canada	S14	6654 6900	Mexico	L20	6268 2678
Chile	N10	6237 8977	Morocco	M12	6268 2678
Colombia	L20	6341 7155	Morocco	M12	6392 9881
Costa Rica	N10	6487 1885	Nepal	N10	6268 2678
Cuba	D17	6635 8172	Netherlands	N10	6737 1050
Denmark	C12	6255 5090	New Zealand	N10	6268 2678
Egypt	C12	6253 6961	Nigeria	N10	6268 2678
Finland	C12	6254 4642	Norway	N10	6818 2000
France	C12	6253 6961	Poland	N10	6727 6868
Germany	C12	6732 3071	Poland	N10	6727 3977
Greece	D17	6683 0882	Portugal	L10	6224 2256
Holland	W17	6544 6000	Portugal	L10	6224 2256
India	L10	6237 8977	South Africa	N10	6268 2678
Indonesia	L10	6237 8977	South Africa	N10	6268 2678
Italy	C12	6253 6961	South Korea	N10	6268 2678
Japan	C12	6253 6961	South Korea	N10	6268 2678
Jamaica	C12	6253 6961	Sri Lanka	N10	6268 2678
Jordan	N10	6268 2678	Sweden	N10	6410 9271
Kuwait	F11	6804 9590	Thailand	H4	6737 2475
			Turkey	V15	6422 7322
			United Arab Emirates	L19	6238 8206

**PUBLIC TRANSPORT**  
Singapore Tourist Pass: 6496 8300  
Website: www.touristpass.com.sg/home-tourist

**TAXIS**  
Comfort Taxi & CityCab: 6552 1111  
Premier Taxi: 6778 0008  
Taxis Cab: 6555 3333  
Solex: 6508 8888

**PRECINCTS**  
Chatterbox, Kampong Glam, Little India, Marina Bay, Orchard Road

**GO DIGITAL... DOWNLOAD PDF MAPS**  
Download these Digital PDF Maps of specific areas of Singapore onto your mobile devices for FREE and explore Singapore with ease.  
SMALL FILE SIZES AND SCALABLE FOR A CLEARER VIEW

**MRT MAPS:**  
• ENGLISH  
• JAPANESE

**ETHNIC AREAS:**  
• CHINATOWN  
• KAMPONG GLAM  
• LITTLE INDIA

**ISLANDS AND GARDENS:**  
• SENTOSA  
• GARDENS BY THE BAY

**CITY AREAS AND FRINGES:**  
• BALESTIER  
• BUGIS  
• MARINA BAY  
• TANJONG PAGAR

**Map digital**

**SINGAPORE CITY MAP**

**JOGGING ROUTES**  
BALMORAL ROUTE - 2.4 KM  
BUKIT TIMAH ROUTE - 5.0 KM  
HERITAGE ROUTE - 2.15 KM  
MARINA BAY ROUTE - 3.70 KM  
COASTAL ROUTE - 5.0 KM

**Shopping Routes:**  
SHOPPING ROUTE - 3.0 KM  
RESIDENTIAL ROUTE - 5.0 KM

**Scale 1:10,000**  
metres 0 100 200 300 400 500  
mm 0 10 20 30 40 50

**SLA Map**

**GLASSES READY IN 30MINS**  
OVER 700 DESIGNS TO CHOOSE FROM

**CONTACT LENS READY AVAILABLE**

**EYE THEORY**

**FIND OUT MORE!**  
+65 6339 1565 | +65 8799 1565

**OPENING HOURS: 11AM - 9PM DAILY**  
LOCATED AT ZHONGSHAN MALL #01-07 (S329984)  
RIGHT BESIDE RAMADA HOTEL

**HOT AND SAVOURY**  
ROU GU CHA | 肉骨茶 | BAK KUT TEH  
YOUR MUST-EAT WHEN IN SINGAPORE

The secret to the quality of Founder's Bak Kut Teh is in the insistence of its founder, in using only the freshest meaty pork ribs, simmered in a specially formulated broth of herbs and spices.

347 Balestier Road (New Orchard Hotel)  
Singapore 329777  
Tel: 6352 6192

**MIRROR ON WALL**  
The Beginning Of The New Chapter

**HIGHLY RECOMMENDED THE BEST SALON IS JUST NEXT DOOR TO YOU**

**MOW Salon** is a spacious and stylishly designed hair salon. Feel at ease and be assured that you will get the best reliable service provided by our team of highly skilled and experienced hair stylists.

**HAIR SERVICES**  
Hair Cut, Wash and Styling, Hair Coloring, Hair Perming, Straightening Keratin Treatment, Hair & Scalp Treatment Services

**Event / Wedding Make Up & Hair Styling Services (By Appointment Only)**

6970 1206 | 9758 1816  
Opening Hours: Weekday 10am-8pm, Weekend / Public Holiday 10am-7pm  
V10 @ Balestier 520 Balestier Road, #01-03 (04/05), Singapore 329853  
www.mowsalon.com

**Major attraction tickets are available at the Concierge counter at Ramada by Wyndham Singapore at Zhongshan Park. Please approach them for more information.**